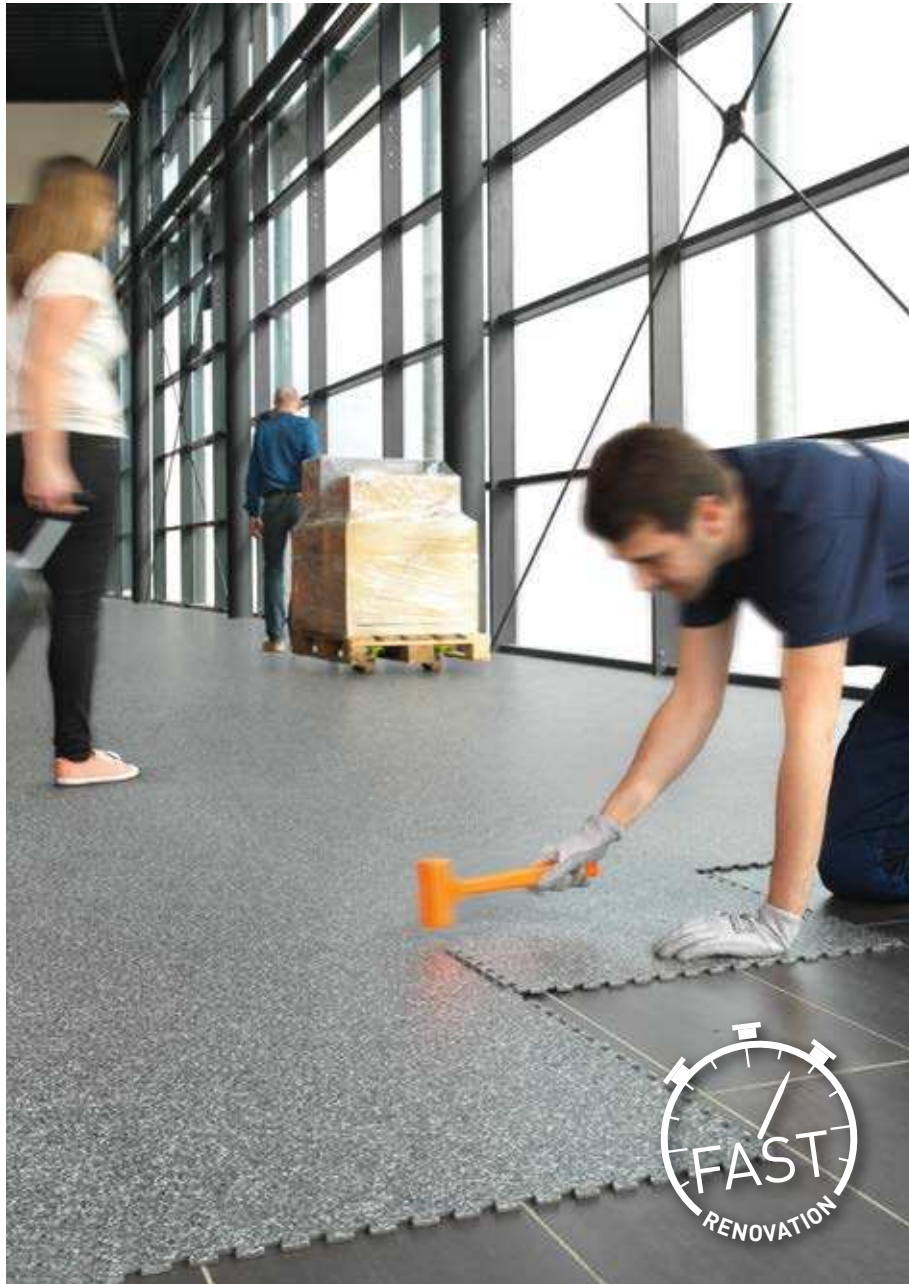


GTI MAX

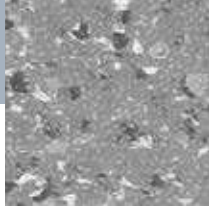
THE BEST HEAVY TRAFFIC FLOORING SOLUTION

gerflor.com

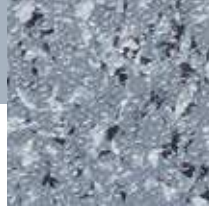


Gerflor[®]
theflooringgroup

REDISCOVER THE GTI MAX RANGE FOR AN EASY AND LONGLASTING RENOVATION



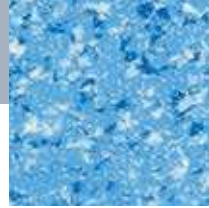
0266 - Peler **R**



0252 - Titanium **R**



0253 - Aluminium **R**



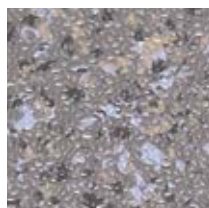
0255 - Saphir **R**



0253 - Aluminium



0249 - Carbon **R**



0247 - Magma **R**



0267 - Levante **R**

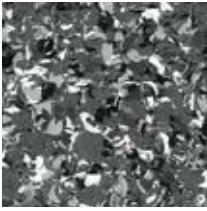


0264 - Ponente **R**

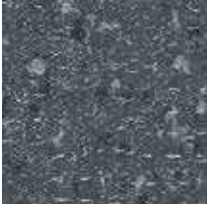


0265 - Maestrale **R**

R Rice emboss **B** Concrete emboss



1249 - Tramontana **B**



0260 - Ora **B**



0262 - Libeccio **B**



0263 - Bora **B**



0259 - Grecale **B**



0261 - Scirocco **B**



0268 - Ermellino **B**



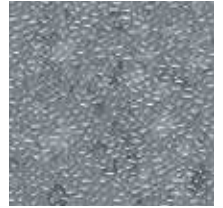
0236 - Black / 0231 - Yellow



0236 - Black **R**



0234 - Light Grey **R**



0235 - Dark Grey **R**



0232 - Red **R**



0230 - Blue **R**

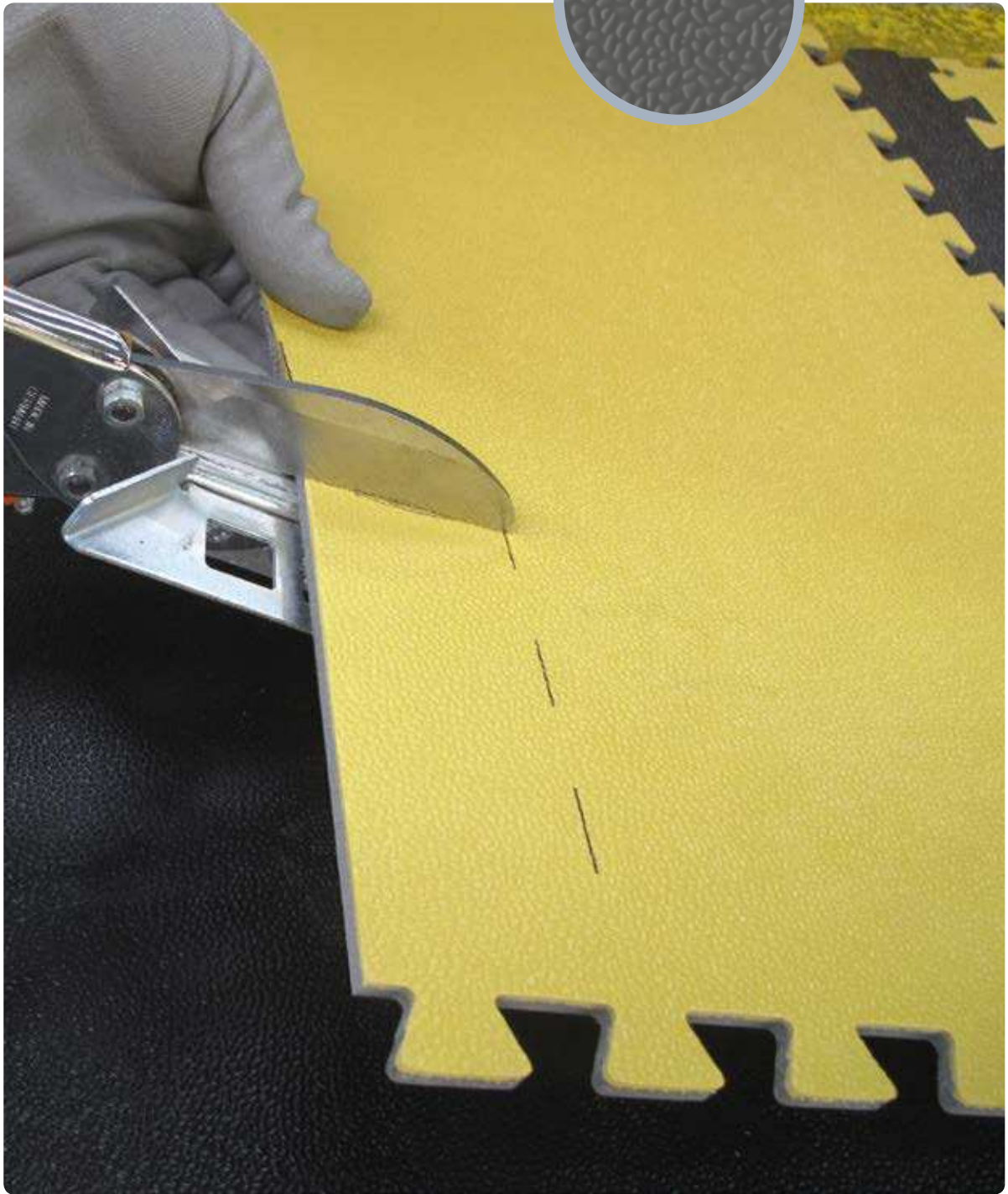
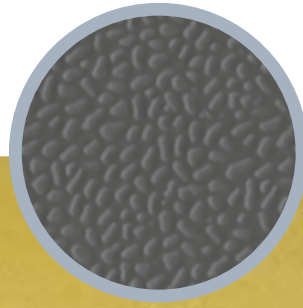


0233 - Green **R**



0231 - Yellow **R**

RICE EMBOSSING



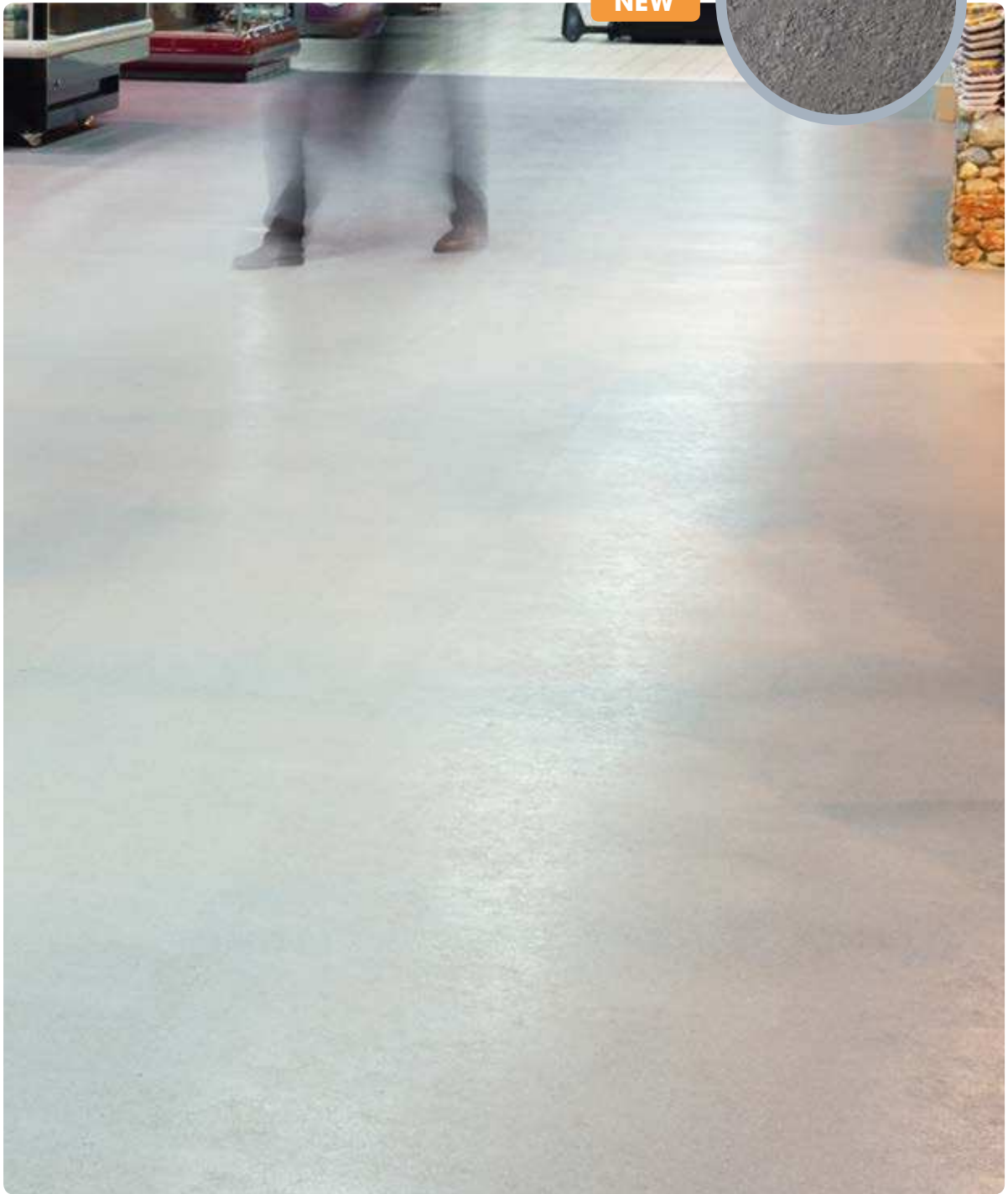
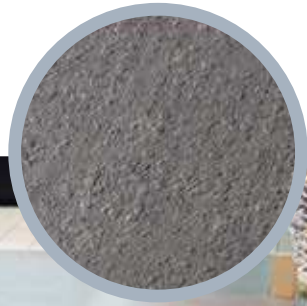
SLIP RESISTANCE **R10 RATED**

10 YEARS OF EXPERIENCE

16 COLOURS

CONCRETE EMBOSSING

NEW



SLIP RESISTANCE **R10 RATED**

HSE 36 COMPLIANT

7 COLOURS

HEAVY TRAFFIC RESISTANCE!



- Dynamic Load: up to 6000 kg*
- Static load: up to 50 kg/cm²

INSTALLATION ON ANY TYPE OF SURFACE



TILES



CONCRETE



RESIN



WET SURFACES
- up to 7% humidity / 92% RH



ASBESTOS SURFACES



NO NEED TO STOP WORK

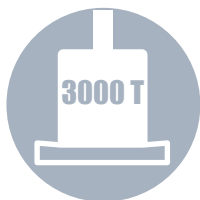


- Fast looselay installation allowing the area to remain open
- Clean installation - no adhesive or dust
- A 2 person team can install up to 200m² in 8 hours

* Refer to installation guidelines

GTI MAX

HARD-WEARING



- Tiles triple pressed at over **3000 T**



- **2mm** wear layer



- PUR+ surface treatment enabling **easy maintenance**

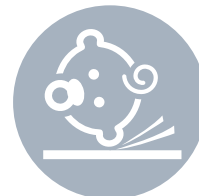
USER COMFORT & SAFETY



- **19 dB** less noise than tiling when users walk on it
- Underfoot comfort: **reduces fatigue**



- More slip-resistant than other types of surface (**R10 rated**)

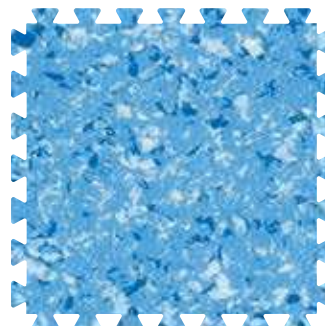


- **4 x less hazardous** than tiling in the head impact assessment (Standard 1177: head impact - 66 cm vs. 10 cm)

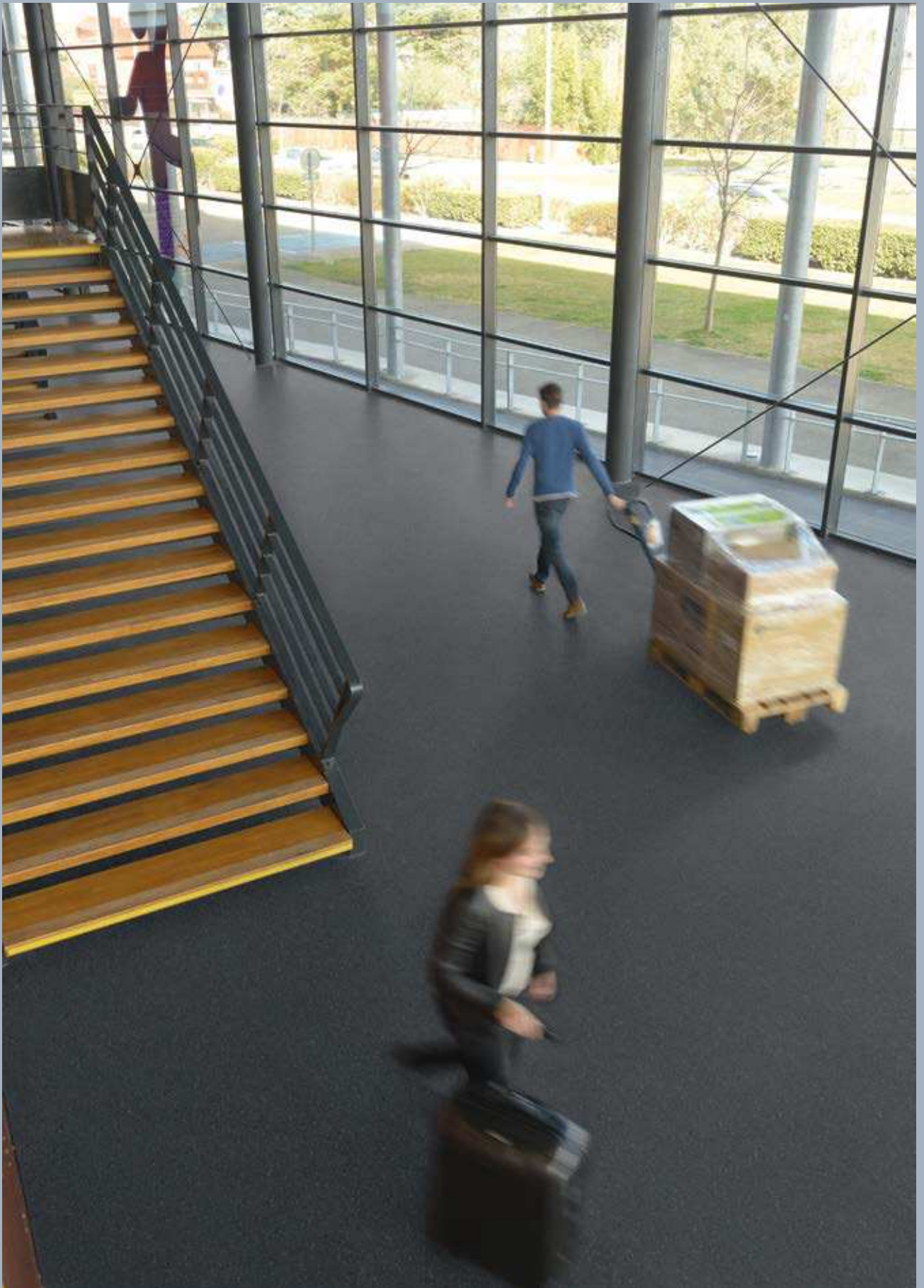


DESIGNS & LAYOUT

- Easy to install: modular tile format
- 23 colours to create zoning & corners



635 x 635 mm



TRIAL BY EXPERIENCE



THE HOTEL AND HOSPITALITY SECTOR



The installation of our new flooring has breathed fresh life into this area of high pedestrian traffic. It is light and easy to maintain - we love it!

Blaine, USA - 200 m² of GTI Max



HEALTHCARE - DRÔME HOSPITAL



We had to renew the floor coverings in the two main passageways of the hospital, without closing off access to areas that are submitted to heavy pedestrian and logistics traffic. Gerflor's GTI flooring was the natural and obvious choice.

Romans, France
300 m² of GTI Max



HEATHROW AIRPORT TERMINAL 3



The GTI Max tiling perfectly fulfilled all of our selection criteria:

- To keep pedestrian and machinery routes open throughout its installation
- To allow existing furniture to remain in place
- To minimise any weight addition to the airport structure

Heathrow, England
4000 m² of GTI Max



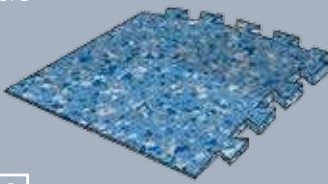
FULL SOLUTION

100% LOOSELAY **FLOORS AND FINISHES**

FINISHING SOLUTIONS

CORNER & ACCESS

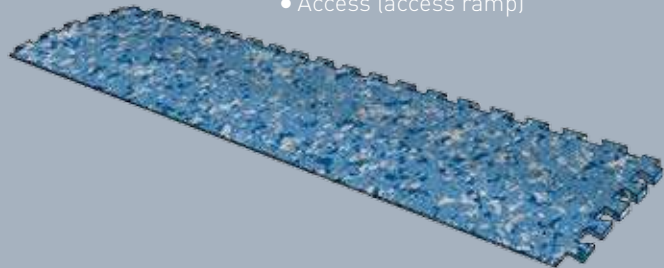
- Corners



THE +

- All GTI Max colours available

- Access (access ramp)

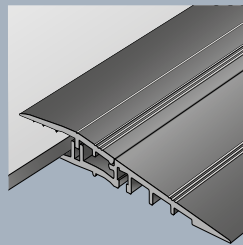


ALUMINIUM RAMP

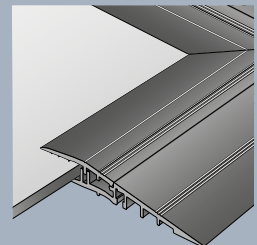
- Withstands intensive footfall
- Unique 100% looselay system

THE +

- Quick to install and can be removed without causing any damage
- Elegant and durable aluminium



0609 - Ramp



0629 - Corner

ENTRY MAT



1719 - Romat GT

- Same thickness as GTI Max tiles
- Full kit ready-to-lay including the mat, frame sections and fastenings
- Withstands intensive footfall

THE +

- Surface not damaged (no adhesives or screws)
- Full 100% looselay system (no adhesives or screws)

TAILOR-MADE SOLUTION

MY LOGO



- Create your logo using our water jet cutting system.
- The logo is produced using the finished product.

THE +

- Withstands intensive footfall without fading.

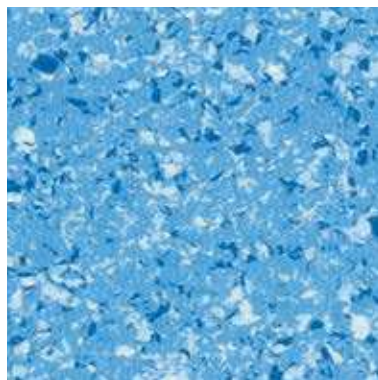
100% WATERPROOF SOLUTION

GTI MAX CLEANTECH TILE

- Square with straight edges
- Heat seamable

THE +

- Enables a waterproof surface



600 x 600 mm



LESS ADHESIVE MORE RECYCLING



COMPOSITION

- 100% REACH compliant
- FREE of formaldehyde
- FREE of heavy metals
- FREE of solvent



RECYCLED CONTENT

- 80% recycled content
- 100% REACH compliant recycled content



LIFE CYCLE ANALYSIS

- Eco-designed according to a product specific Life Cycle Analysis
- Product specific EPD (Environmental Products Declaration) available
- Manufactured in an ISO 14001 and ISO 50001 certified site
- Contribution to many Green Building Schemes (LEED, HQE, BREEAM...)



RECYCLING

- 100% recyclable product



INSTALLATION

- Adhesive free installation



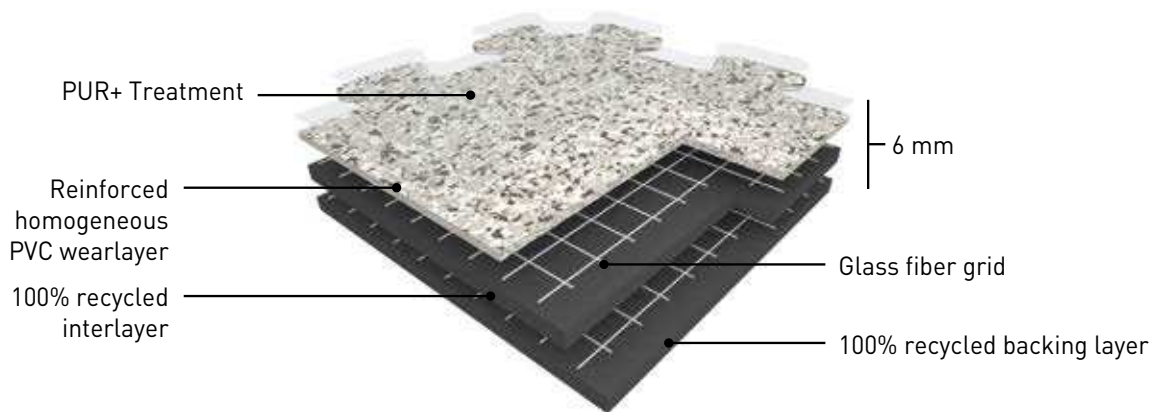
INDOOR AIR QUALITY

- TVOC emissions 10 times better than norm requirements (TVOC < 100 µg/m³ after 28 days)
- Floorscore® certified
- M1 certified
- Comply with AgBB protocol
- No formaldehyde emission



TECHNICAL DATA

GTI MAX



GTI MAX CONNECT is a multi-layered interlocking looselay vinyl tile with polyurethane treatment (PUR+), 6 mm thick with a dovetail joint, abrasion group T. It is manufactured by GERFLOR using a continuous and exclusive high pressure process.

GTI MAX CLEANTECH is a multi-layered looselay vinyl tile with polyurethane treatment (PUR+), 6 mm thick with welded joints, abrasion group T. It is manufactured by GERFLOR using a continuous high pressure process.

The **GTI MAX** wear layer is reinforced by specific oblong fillers that offers an outstanding resistance to traffic.

GTI MAX is reinforced with 2 glass fiber grids on either side of an intermediate pressed homogeneous layer. GTI's backing is a 4 mm thick black pressed homogeneous sheet, its surface is a colored and reinforced homogeneous sheet 2 mm thick.

It is made of 100% controlled recycled materials.

It is 100% recyclable and made with up to 80% recycled content.






GTI MAX

- ▶ Resistant to heavy traffic
- ▶ Fast renovation: can be installed over existing floorcovering
- ▶ No subfloor preparation, no adhesive and no production stoppage (no loss of revenue)
- ▶ Polyurethane surface treatment PUR+ for ease of maintenance
- ▶ 6 Standard logos: Mix and match colours to create corners and walkways

GTI MAX

CONCRETE EMBOSS

RICE EMBOSS

DESCRIPTION			
Total thickness	EN ISO 24346 (EN 428)	mm	6
Wearlayer thickness	EN ISO 24340 (EN 429)	mm	2
Weight	EN ISO 23997 (EN 430)	g/sq.m	9365
Size CONNECT			635 x 635
Size CLEANTECH⁽¹⁾ (without dovetail)	EN ISO 24342 (EN 427)	mm	600 x 600
CLASSIFICATION			
Norm / Product specification	-	-	EN ISO 10582 (EN 649)
European classification	EN ISO 10874 (EN 685)	Class	34-43
Fire rating	EN 13 501-1	Class	B _{fl} -s1
Static electrical propensity	EN 1815	kV	< 2
Slip resistance wet: ramp test with oil	DIN 51 130	Class	R10
Pendulum test	BS 7976	-	HSE 36 compliant ⁽²⁾ -
PERFORMANCES			
Wear resistance	EN 660.2	mm ³	≤ 2
Wear group	NF 189	-	T
Type Binder content	ISO 10582	type	I
Dimensional stability	EN ISO 23999 (EN 434)	%	≤ 0.15
Residual indentation	EN ISO 24343-1 (EN 433)	mm	≤ 0.10
Castor chair test (type W)	ISO 4918 (EN 425)	-	OK
Shore Hardness	EN ISO 868	Hd	≥ 55
Shifting resistance	CSTB 3562	N/mm ²	≥ 30
Thermal conductivity	EN ISO 10456 (EN 12524)	W/(m.K)	0.25
Colour fastness	EN 20 105 - B02	Degree	≥ 6
Surface treatment	-	-	PUR+
Chemical products resistance	EN ISO 26987 (EN 423)	-	OK
ENVIRONMENT / INDOOR AIR QUALITY			
TVOC after 28 days	ISO 16000-6	µg / m ³	<100
Certification	-	-	Floorscore®
CE MARKING			
	EN 14041		  

(1) Available upon request

(2) HSE 36 compliant only for 7 references: Ermellino - Ora - Bora - Libeccio - Grecale - Scirocco - Tramontana

Gerflor Don't forget our complementary ranges!



Handrails



Wall Coverings
& Protections



Entrance mats



Skirtings
& Profiles

Gerflor International
Tel: +33 (0)4 74 05 40 00
Fax: +33 (0)4 74 05 03 13
e-mail: gerflorcontract@gerflor.com

gerflor.com

**ARCHITECTURE
DECORATION
SPORT
TECHNOSPECIFIC**

RC Lyon B 726 550 152 - JPE - Printed in CEE 209 406 - 10/2017 - 2004 4881 - Documentation indicative price: 2€

Gerflor Be connected!




www.gerflor.com

#Gerflor

GTI MAX: LESS ADHESIVE, MORE RECYCLING



COMPOSITION
100% REACH



INSTALLATION
Adhesive free



**INDOOR
AIR QUALITY**
10 times lower
than norms requirements
(TVOC < 100 µg/m³ after 28 days)



**RECYCLED
CONTENT**
80%



RECYCLABILITY
100%
recyclable product



LCA
Eco-designed
according to a
product specific Life
Cycle Analysis

Gerflor
theflooringgroup